



# SOLAR MOUNTING SYSTEMS

# EAE GROUP IN NUMBERS



## Since 1973

*EAE Group of Companies started its journey in the electrical sector in 1973 with the establishment of EAE Elektrik. Since its founding, EAE has grown rapidly, expanding its production and areas of operation by incorporating EAE Lighting in 1983, EAE Machinery in 1996, EAE Electrotechnics in 2004, and EAE Technology in 2009.*

*EAE carries out its production activities in accordance with ISO 9001 Quality Management, ISO 14001 Environmental Management, ISO 14064-1 Greenhouse Gas Management System, ISO 45001 Occupational Health and Safety Management, ISO 10002 Customer Satisfaction Management, ISO 50001 Energy Management System, and ISO 27001 Information Security Management System standards.*



**50+**  
Years Experience



**7**  
Active Factories



**360.000m<sup>2</sup>**  
Enclosed Space



**3**  
R&D Centers



**150+**  
Countries Exported To

# CONTENTS

---

## GROUND APPLICATION SOLUTIONS

Ramming Ground Applications .....	2-3
Concrete Floor Applications .....	4
Single Counterfort Applications .....	5

## ROOF APPLICATION SOLUTIONS

Standard Flat Roof Applications .....	6-7
---------------------------------------	-----

## CARPORT APPLICATION SOLUTIONS

Carport Application .....	8
---------------------------	---

## REFERENCES

Energy References .....	9-10
-------------------------	------

---

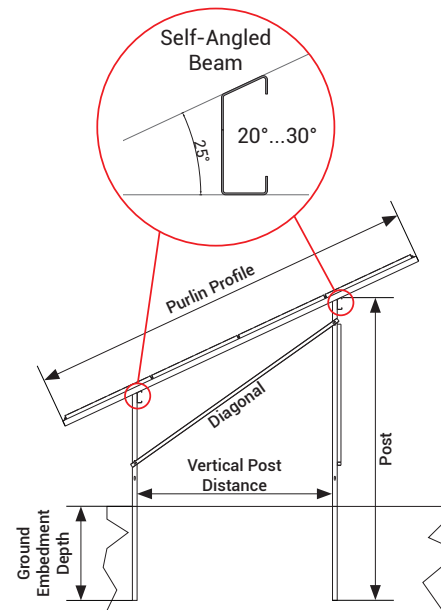


# SOLAR MOUNTING SYSTEMS

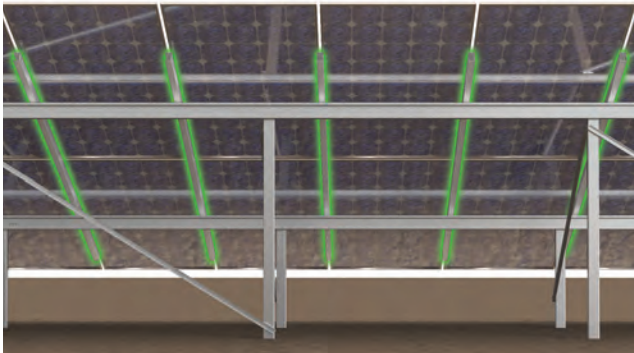
## GROUND APPLICATION SOLUTIONS

### Ramming Ground Applications

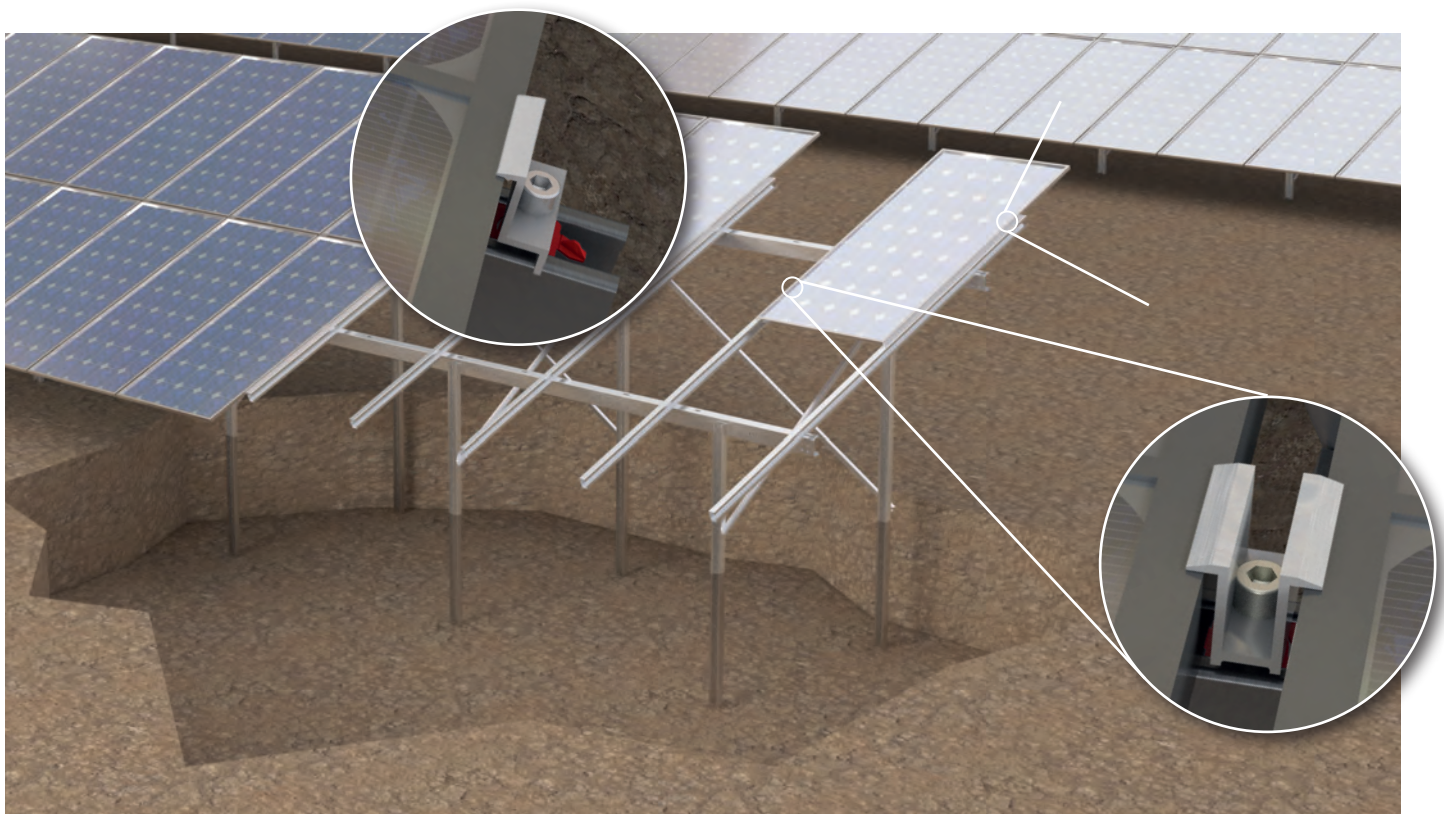
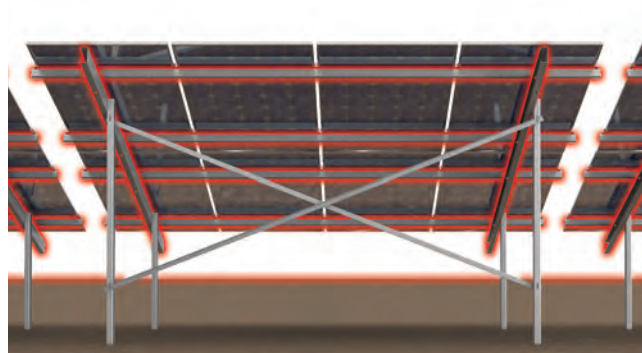
- It is available to be used in ramming and drilling&concrete applications.
- Applied in Vertical Designs.
- Especially Designed for Bifacial Panels. It is designed in such a way that it does not cast shadow on the cells on the back surfaces of the PV panels ("Zero Shading").
- "Self-Angled Beam" Profile can be produced at angles between 20° and 30°.
- With the use of high quality raw materials and precise quality controls during and after the production phase, it minimises product deformations during application in the field.
- It offers the advantage of fast and easy installation with advanced engineering and special "Self-Angled Beam" design. In this way, it provides significant savings in labour cost.



Correct Installation;



Incorrect Installation;

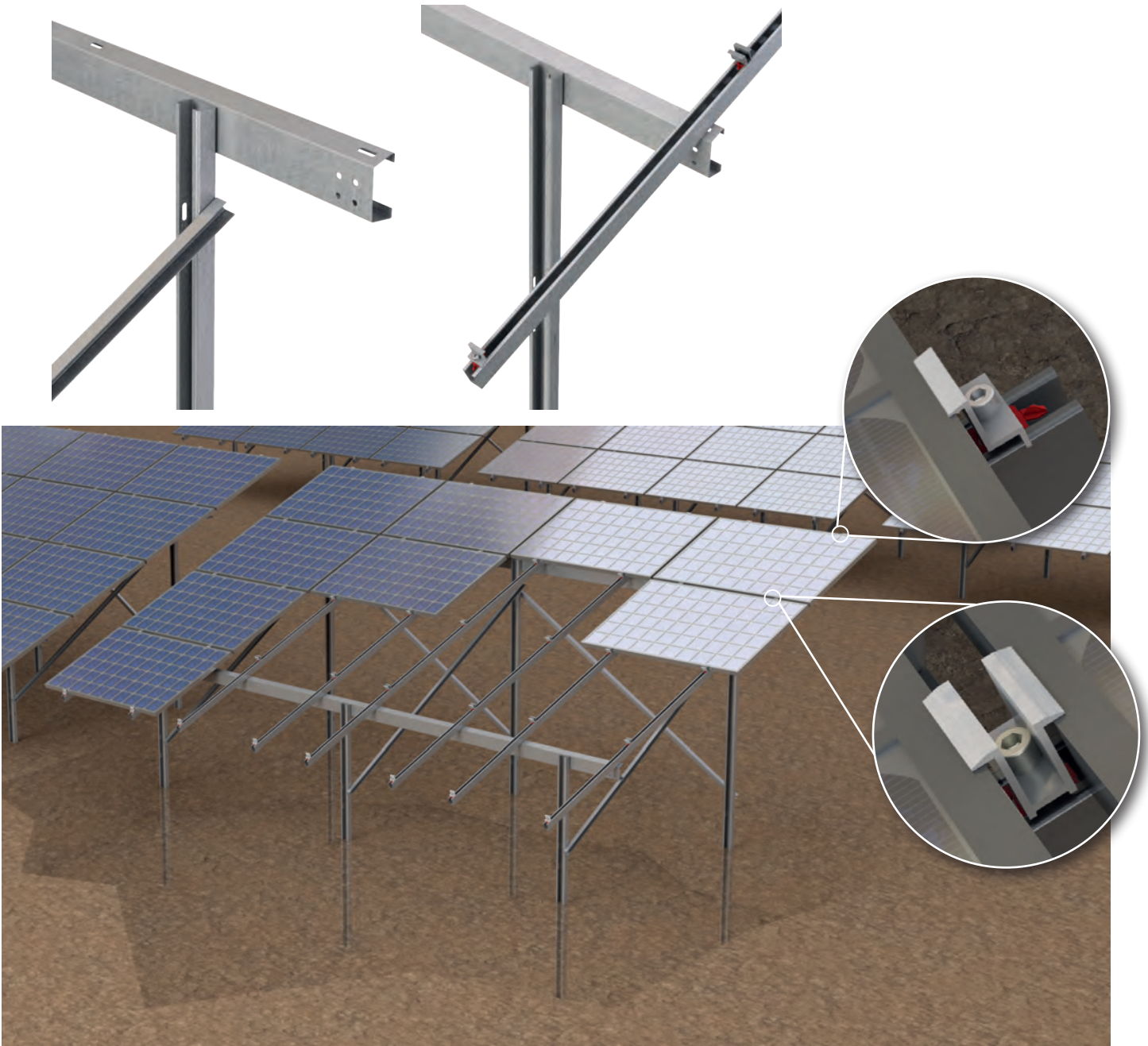
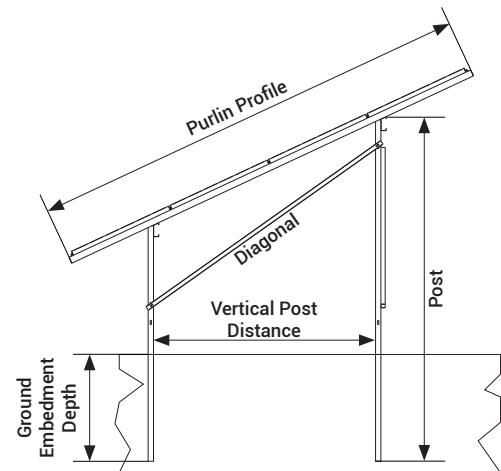


# SOLAR MOUNTING SYSTEMS

## GROUND APPLICATION SOLUTIONS

### Ramming Ground Applications

- Used for grounds convenient for ramming application.
- Embedment depth may vary according to the structure of the soil and static and dynamic loads in the project zone.
- Minimizes product deformations formed during ramming applications with the use of high-quality raw material use and precise quality controls.
- Offers fast and easy assembly advantage with state-of-the-art engineering and design. Thus, ensures serious savings on workmanship costs.





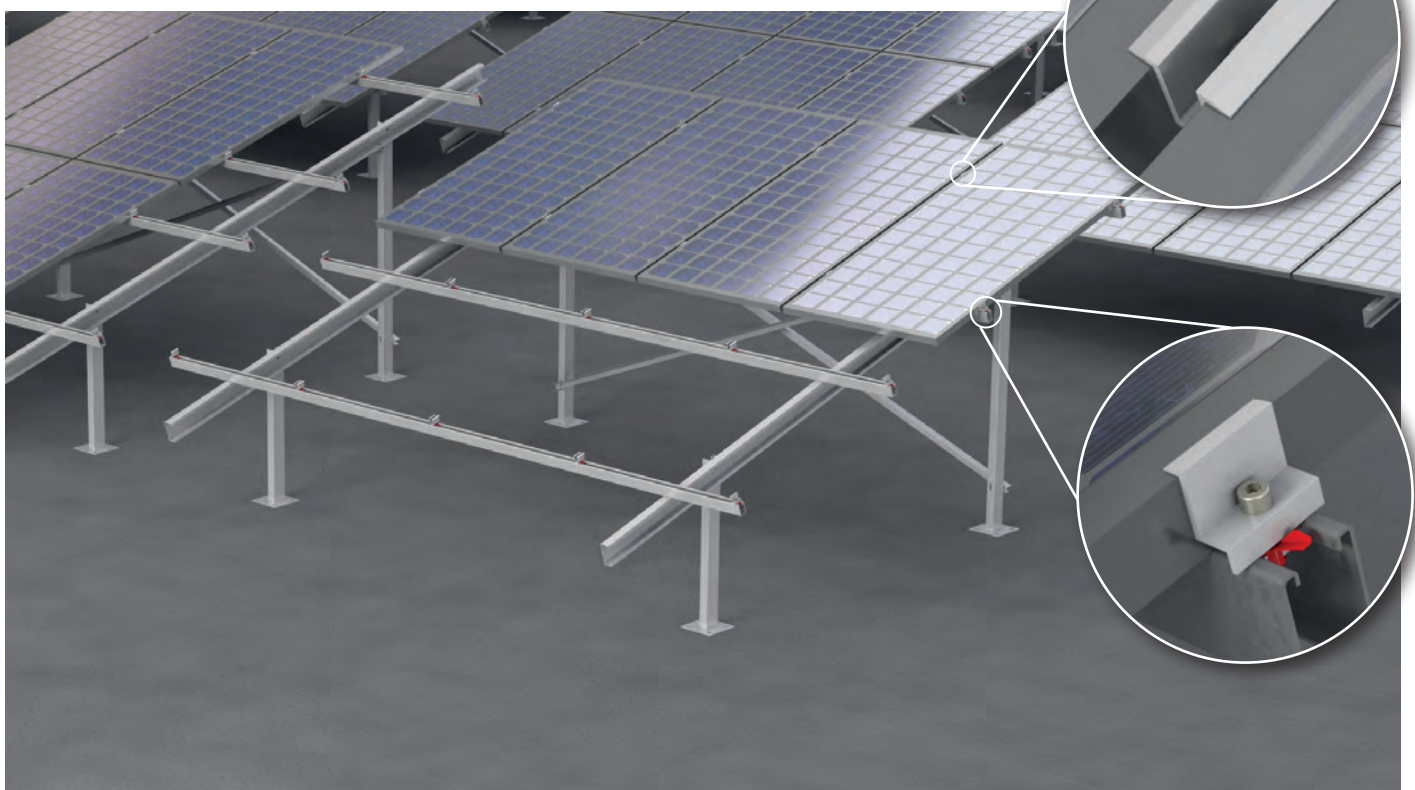
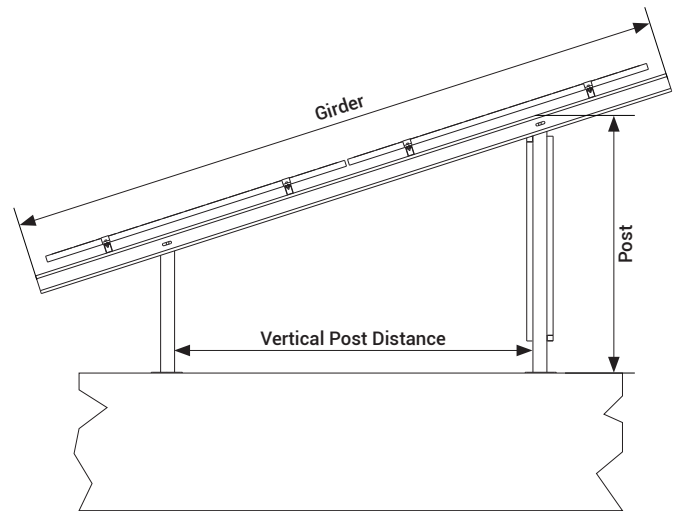
# SOLAR MOUNTING SYSTEMS

## GROUND APPLICATION SOLUTIONS

### Concrete Floor Applications



- Used for grounds that are not convenient for ramming application.
- Concrete floor measurements may vary depending on the project.
- Minimizes product deformations formed during ramming applications with the use of high-quality raw material use and precise quality controls.
- Offers fast and easy assembly advantage with state-of-the-art engineering and design. Thus, ensures serious savings on workmanship costs.

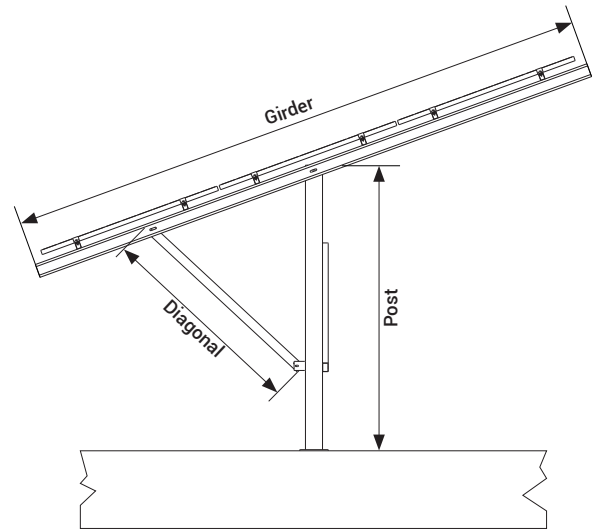


# SOLAR MOUNTING SYSTEMS

## GROUND APPLICATION SOLUTIONS

### Single Counterfort Applications

- Used for grounds that are not convenient for ramming application.
- Concrete floor measurements may vary depending on the project.
- Minimizes product deformations formed during ramming applications with the use of high-quality raw material use and precise quality controls.
- Offers fast and easy assembly advantage with state-of-the-art engineering and design. Thus, ensures serious savings on workmanship costs.

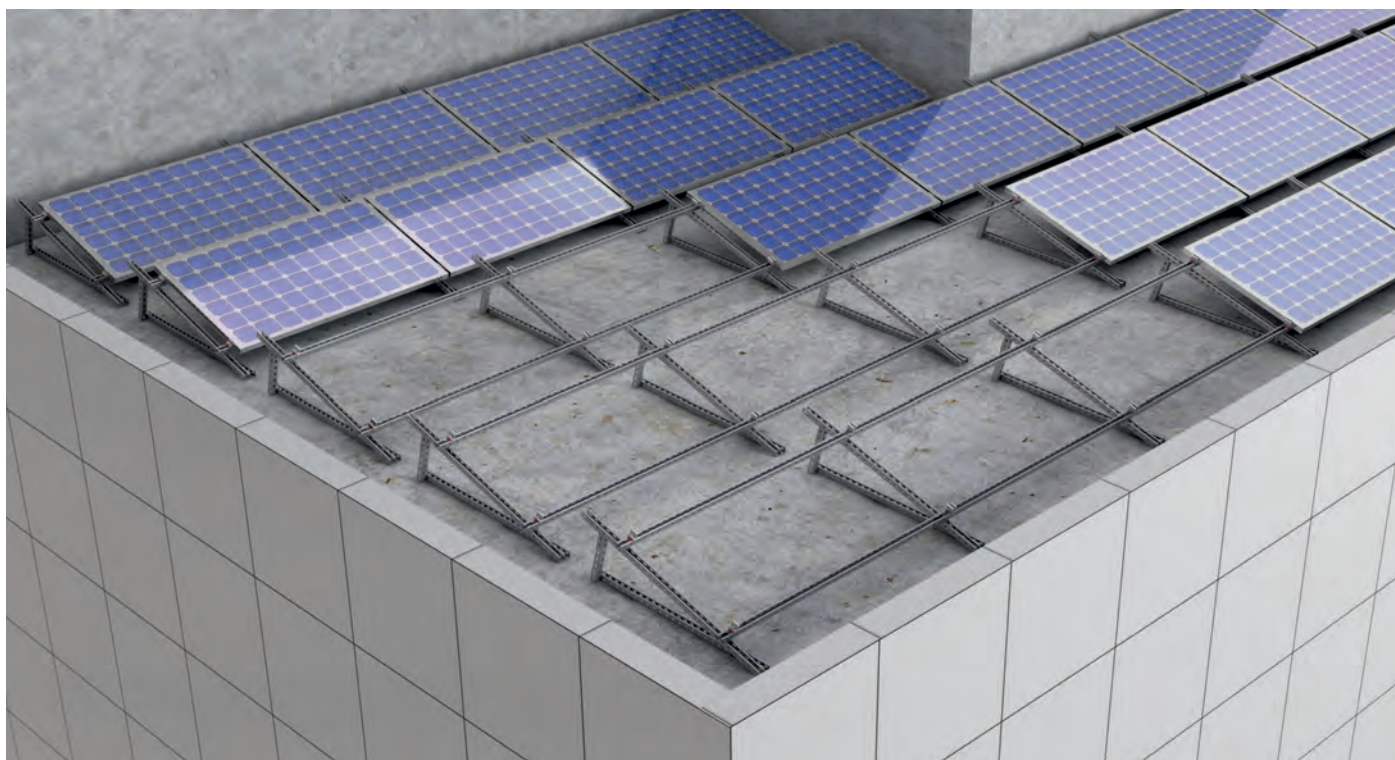




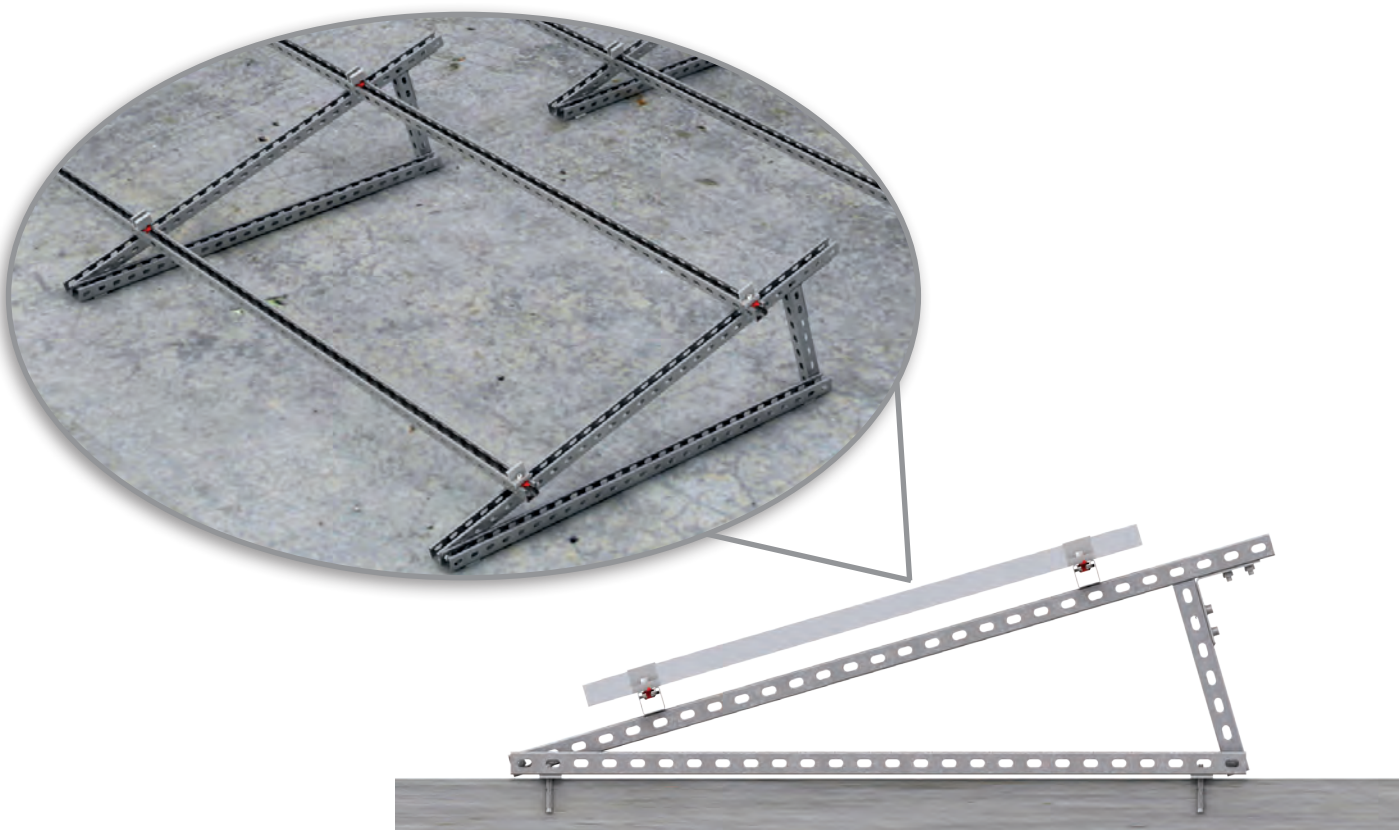
# SOLAR MOUNTING SYSTEMS

## GROUND APPLICATION SOLUTIONS

### Standard Flat Roof Applications



Standard Flat Roof Type-1





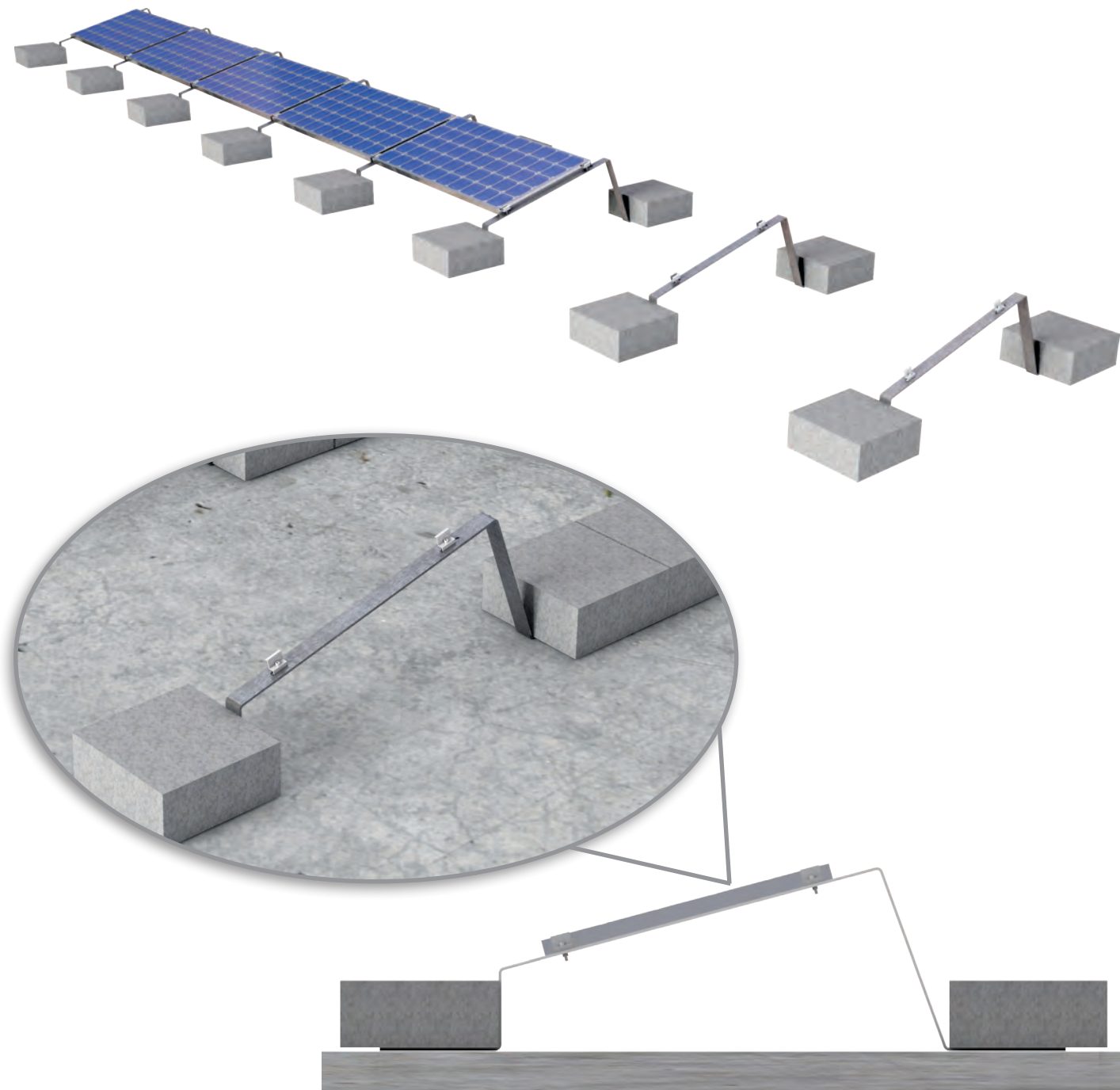
# SOLAR MOUNTING SYSTEMS

## GROUND APPLICATION SOLUTIONS

### Standard Flat Roof Applications



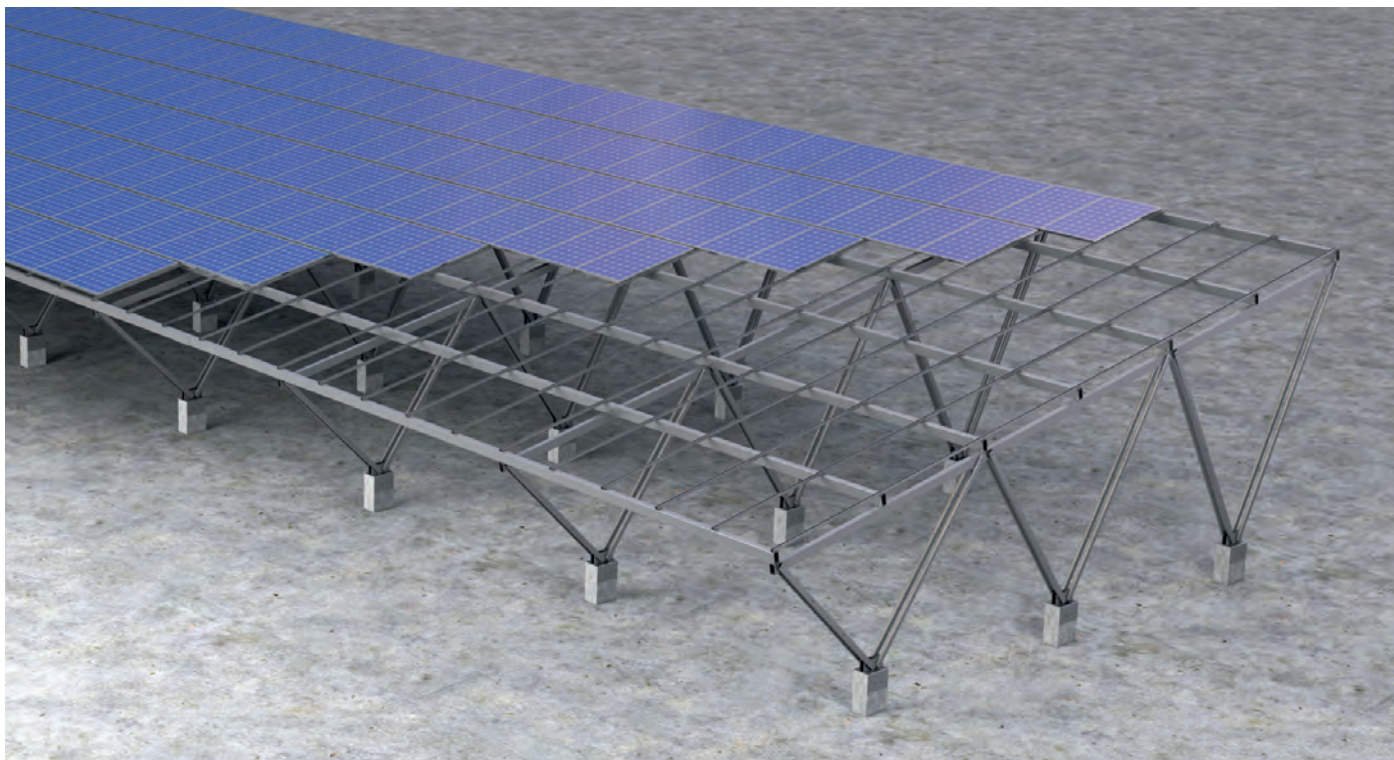
Standard Flat Roof Applications Type-2		
Description	Weight (kg/m)	Order Code
Roof Type Support Foot	9,330	3188595



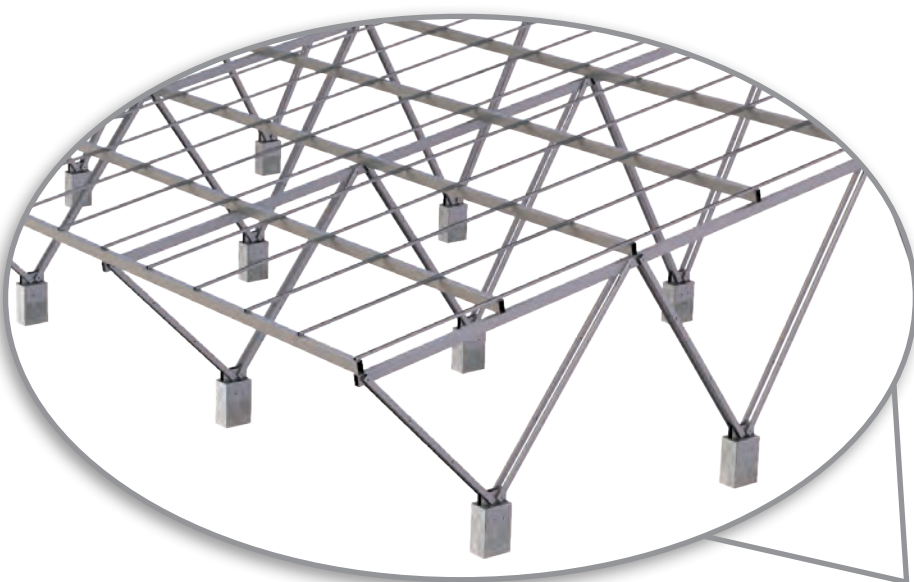
# SOLAR MOUNTING SYSTEMS

## CARPORT APPLICATION SOLUTIONS

Carport Application



Carport:





# SOLAR MOUNTING SYSTEMS

## REFERENCES

### Energy References



FIXED TILT GROUND APPLICATION – SOLAR MOUNTING SOLUTIONS



FIXED TILT GROUND APPLICATION – SOLAR MOUNTING SOLUTIONS



FIXED TILT GROUND APPLICATION – SOLAR MOUNTING SOLUTIONS





# SOLAR MOUNTING SYSTEMS

## REFERENCES

### Energy References



FIXED TILT GROUND APPLICATION – SOLAR MOUNTING SOLUTIONS



CARPORT APPLICATION – SOLAR MOUNTING SOLUTIONS



FIXED TILT GROUND APPLICATION – SOLAR MOUNTING SOLUTIONS

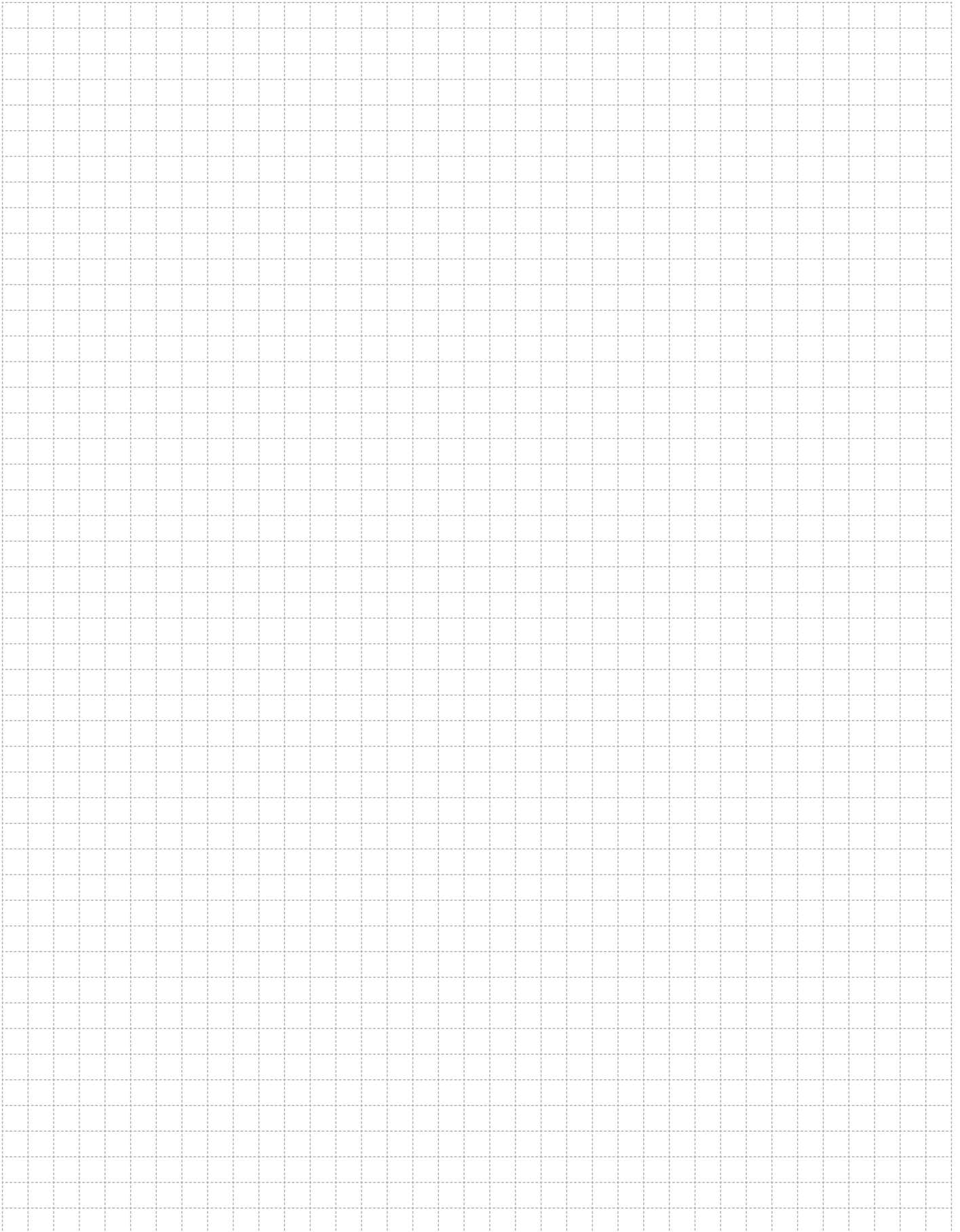




# SOLAR MOUNTING SYSTEMS

## Notes

---

A large rectangular area filled with a fine grid of dashed lines, intended for taking notes or drawing diagrams.

# SOLAR MOUNTING SYSTEMS

## Notes

---

A large rectangular area filled with a fine grid of dashed lines, intended for taking notes or drawing diagrams.

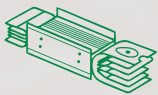


# SUSTAINABLE FUTURE

## Sustainability Management at EAE Elektrik



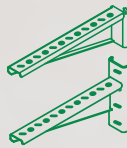
As part of our goal to support sustainable development and green transformation, measuring, evaluating, and managing all economic, environmental, and social impacts resulting from our sustainability practices is a key governance priority for EAE Elektrik. We act with great care in analyzing, monitoring, and managing the economic, environmental, and social impacts and risks that arise throughout our value chain in both our national and global operations.



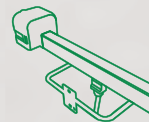
Busbar  
Systems



Cable Tray  
Systems



Support  
Systems



Trolley Busbar  
Systems



Fit-Out  
Solutions

*"We are working together with all our stakeholders to develop the electrical technologies that will build the future."*

You can visit our sustainability website at  
[surdurulebilirlik.eae.com.tr](http://surdurulebilirlik.eae.com.tr)



**EAE Elektrik**  
**Head Office**

Akcaburgaz Mahallesi,  
3114. Sokak, No: 10 34522  
Esenyurt - Istanbul - Türkiye  
Tel: +90 (212) 866 20 00  
Fax: +90 (212) 886 24 20

**EAE DL 1 Factory**  
**Cable Tray**

Gebze IV Istanbul Makine ve Sanayicileri  
Organize Bolgesi, 6.Cadde,  
No:2 41455 Demirciler Koyu,  
Dilovasi - Kocaeli - Türkiye  
Tel: +90 (262) 999 05 55  
Fax: +90 (262) 502 05 70



Please visit our website for the updated  
version of our catalogues.  
[www.eaeelectric.com](http://www.eaeelectric.com)



Catalogue 39 - En. / Rev. 05 1000 Pcs. 30/06/2025  
E.U.

EAE has full right to make any revisions or changes on this catalogue without any prior notice.